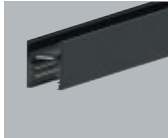
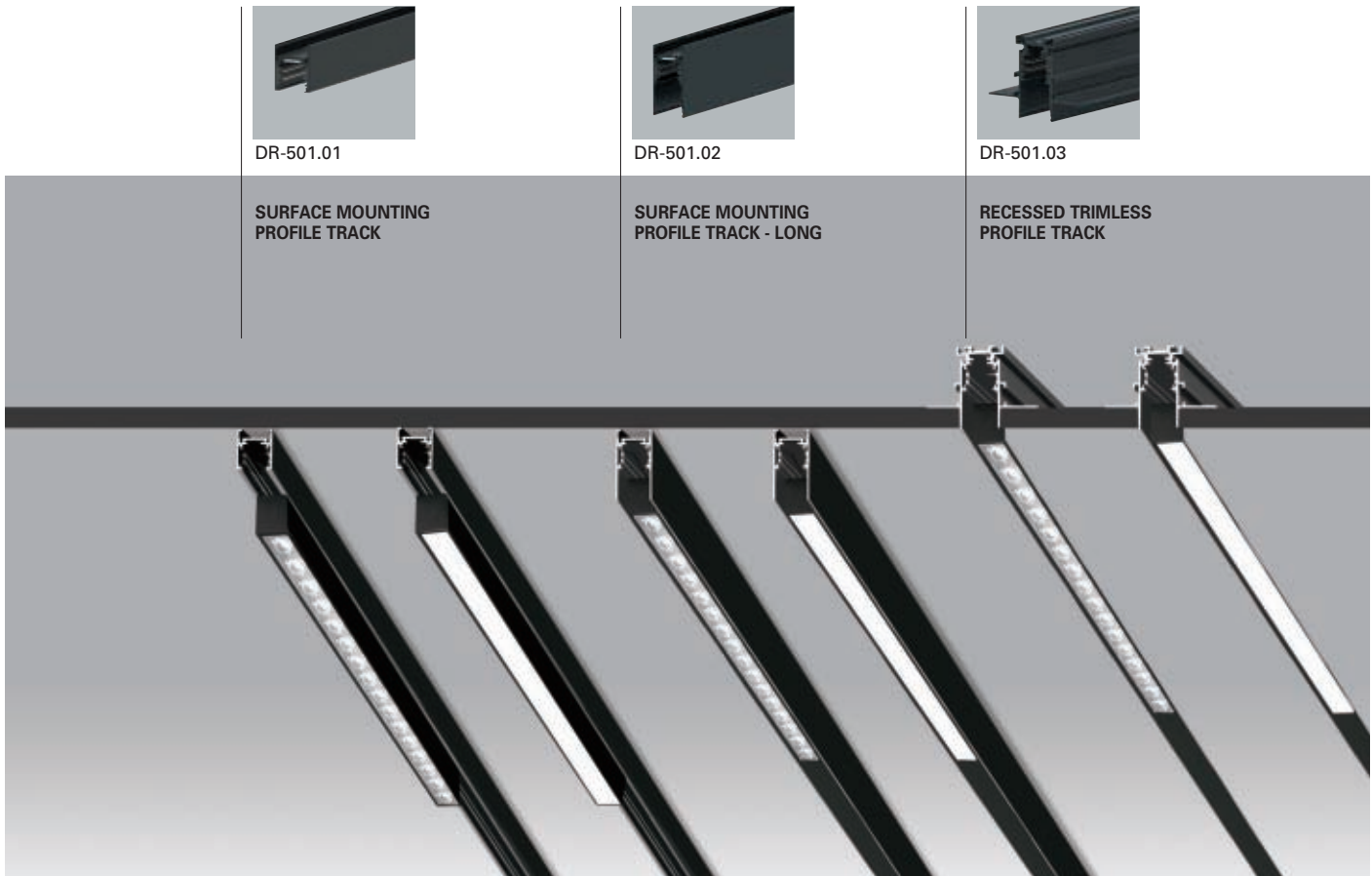


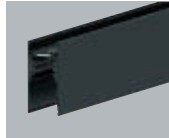
# Cambio

## DC 48V Track System



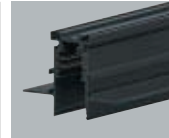
DR-501.01

SURFACE MOUNTING  
PROFILE TRACK




DR-501.02

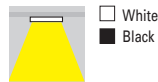
SURFACE MOUNTING  
PROFILE TRACK - LONG



DR-501.03

RECESSED TRIMLESS  
PROFILE TRACK

TYPE OF LED : SMD 



### HOUSING

AL. Extrude, Electrostatic Powder Coating

### COVER

LENS or PC

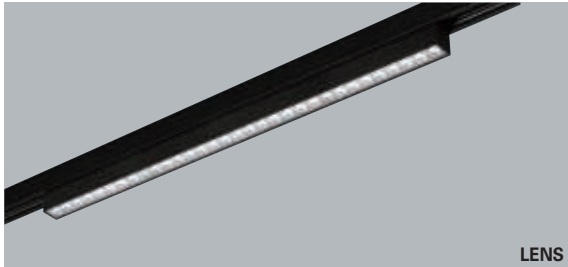
### INSTALLATION

DC 48V track

### \*REQUIREMENT

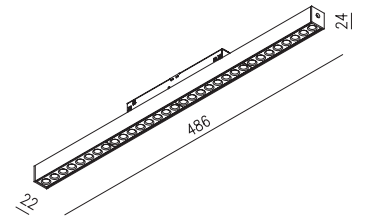
LED Power Supply 48V DC Needed

TYPE OF LED		SMD	
INPUT VOLTAGE		220-240 Vac , 50/60 Hz	
INPUT POWER	CRI	COLOR TEMPERATURE	LUMINOUS FLUX
DDC-65570.01			
20 W	80	3 000 K	1 396 lm
DDC-65570.02			
20 W	80	3 000 K	924 lm
OPERATING TEMPERATURE RANGE		-20 to +40 °C	
MAINTENANCE OF LUMEN -L80		50 000 hours at 25 °C	
COLOR RENDERING INDEX		80, 90	
COLOR TEMPERATURE		5 000 K / 4 000 K / 3 000 K	



LENS

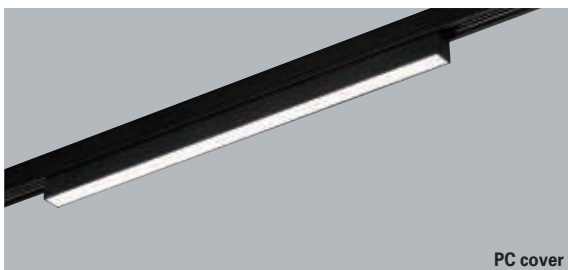
DDC-65570.01 **NEW** SMD 20 W



\* 20 W / 3 000 K

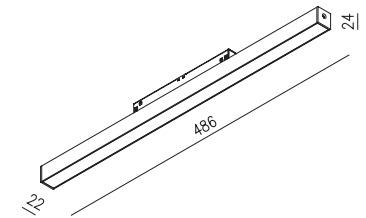
h(m)	E(lx)	D(mm)
1	2615	586
2	654	1173
3	291	1759

cd/1000lm C180 C0



PC cover

DDC-65570.02 **NEW** SMD 20 W



\* 20 W / 3 000 K

h(m)	E(lx)	D(mm)
1	320	3002
2	80	6004
3	36	9006

cd/1000lm C180 C0

DDC-65560.01

DDC-65560.02 0.2 kg

245

DDC-65570.01

DDC-65570.02 0.36 kg

486

DDC-65580.01

DDC-65580.02 0.56 kg

726

DDC-65590.01

DDC-65590.02 0.72 kg

967